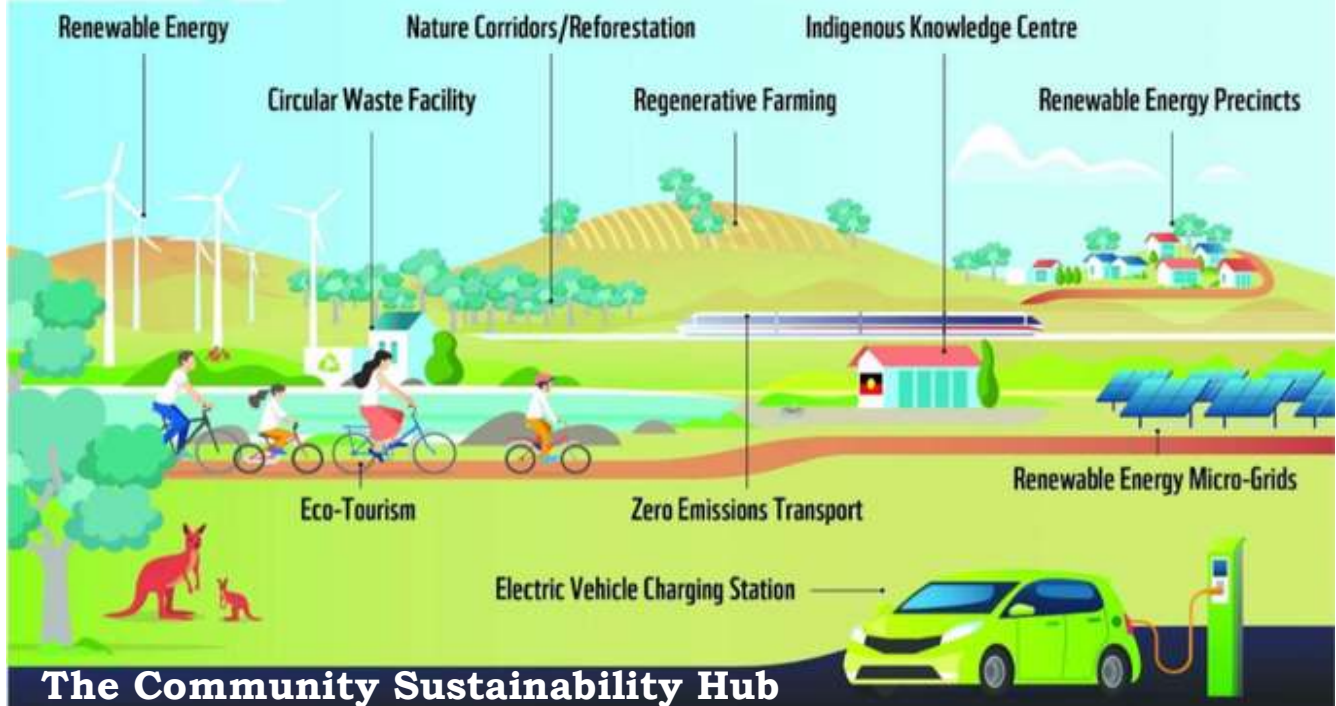


A Vision For Sustainable Communities



INNOVATE TO
REGENERATE



The Community Sustainability Hub

Our Vision

To have a healthy, sustainable community across Goulburn Mulwaree.

Our Mission

Starting with the least advantaged, to build a sustainable community that acts together to address the challenges of the changing climate.

The Goulburn Mulwaree Community Sustainability Hub is designed to bring the community together to help it address the impacts of the now rapidly changing climate, this to be done by building knowledge and capabilities.

The Hub will operate at four levels: the household; the street; the neighbourhood and the community. The planning is top down and bottom-up.

The Hub is designed to work with other hubs as a network across SE NSW. A list of some of these can be found at <https://zerose.space> on the LGA Fact Sheet.

The Hub is designed to help build a circular/resource-based economy based on clear objectives and targets to inform decision making and to track progress. Key metrics can be found in ZeroSE's Fact Sheet and are based on Ironbark Sustainability's LGA snapshot. The foregoing to be complemented by the One Planet Councils' Framework.

Creating a sense of fun through competitions is a way of achieving this, supported by an annual Sustainability Fair.

An annual Regenerative Agriculture conference will inform and encourage farmers to move to Regenerative Agriculture.

One Planet Councils' Framework

- Health and Happiness
- Equity and Local Economy
- Culture and Community
- Landuse and Wildlife
- Sustainable Water
- Local and Sustainable Food
- Sustainable Materials
- Sustainable Transport
- Zero Waste
- Zero Emissions

Key Members of the Sustainability Hub

- Schools
- Farmers, represented by Landcare
- Health Services
- Charities
- The Council
- Chamber of Commerce/Local Businesses
- Sporting Clubs
- Emergency Services
- Environmental Groups
- Arts Groups, in particular Performing Arts

Contact Bob Philipson 0418 138 004