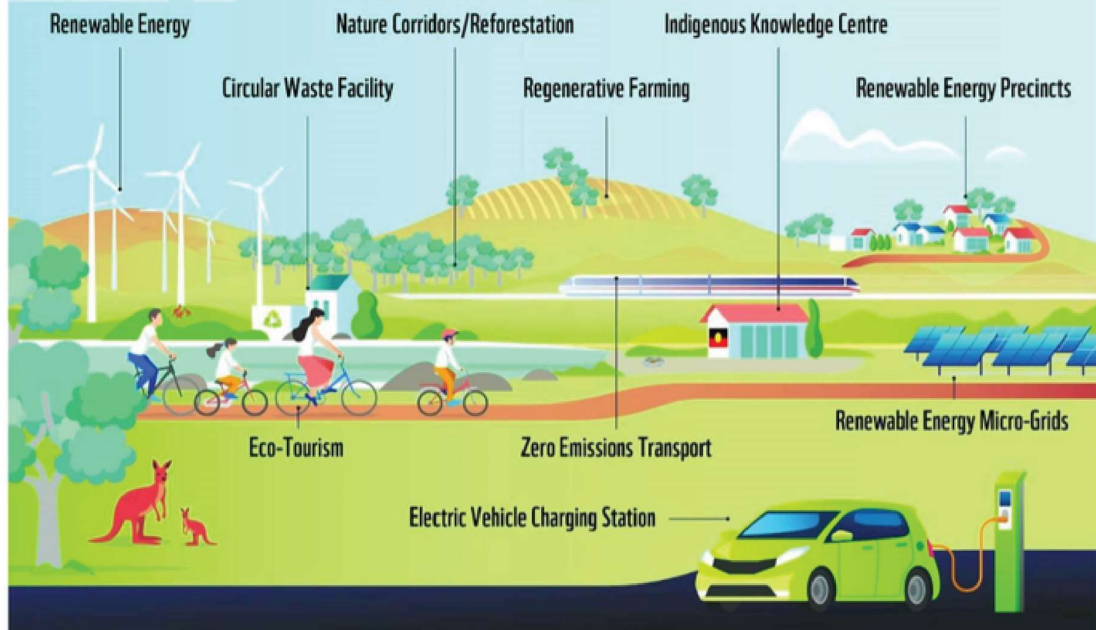


# A Vision for Regenerative Communities



## **Vision**

Working with our CSH network across Southeast NSW to contribute / to influence the creation of a healthy and sustainable ecosystem and circular economies – through:

- Education
- Partnership - community acting together to position us as a Sustainability Hub

## **Mission – enable**

- Equitable communities – equitable distribution of resources
- Future sustainability
- Ecological integrity
- Health natural systems that humans are a part of
- Leaders in responding to the challenges of the changing climate
- Sustainable Homes
- Equity, inclusion, integrity and ethics

# **G-M and SE NSW Community Sustainability Hub**

## **Newsletter:- February 2024 V2**

### **Welcome**

Welcome back after a newsletter hiatus that was not reflective of the level of activity in and around the Hub. The hiatus was due to a disagreement with a bacteria that decided to lodge itself in my body, now gone after a period of hostilities between us.

### **Welcome to new members who include:-**

James Gibson-Laing of LEAN

Australian Soil Management (Chris Main  
CEO) <https://www.asmccarbon.com.au/>

### ***Incorporation Of Sustainable Goulburn-Mulwaree***

The incorporation of Sustainable Goulburn Mulwaree, aka Community Sustainability Hub should be completed within a day or so and then we will have our own bank account and legal entity.

### **Priorities and Partners To Achieve Maximum Community and Economic Benefits of What We Are Doing**

Following on from an initial meeting with the GMC's Economic Development Manager and the President of the Chamber of Commerce, we will be broadening our engagement in determining priorities with our partners as per our list of partners on our web pages, also:-

- The Chamber of Commerce
- GMC's Economic Development Manager
- Dept of Regional NSW
- Bioregional Australia
- The UTS' Institute For Sustainable Futures
- ZeroSE

Opportunities, objectives and priorities, including economic are below and are on our web pages and play to our strengths, such as the volume of water in the landscape:-

- Establishing G-M as a progressive city that will attract and retain scarce skills, such as physiotherapists.
- Attracting eco/agri tourists to build G-M's reputation as an eco/agri tourist centre, Canberra is the main target but Sydney is also a target. In terms of attractions, we already have the Wetlands, the River Walk, areas of the Wollondilly where riverine restoration work has been undertaken by Rivers of Carbon.
- Annual Sustainability Fair
- Grow businesses already in the field of sustainability and show case businesses moving down that path. Attract investment capital.
- Create the jobs to keep our youth who have graduated from Uni in Goulburn Mulwaree.
- Create a G-M/SE Sustainability research centre similar to the one in Bega through the Bega Circular Valley. We have the makings of such a centre already established run by ZeroSE.
- Implement a program to reduce domestic emissions by improving the sustainability of houses and gardens. It is documented that up to 70% of houses built to the 5 star efficiency standard do not comply and can be fixed at a minimal cost.
- Promote the building of sustainable/low carbon housing that will reduce urban heat.

## **Projects On The Go!**

The following two projects are in progress:-

1. Rehydration and Regeneration across up to 20 acres delineated by: –
  - Wheeo Road
  - Coolowyn Road
  - Uworra Close

Landscape Architect Raina Emerson is already on the job with the development of before and after illustrations of the development for the landholders. Raina played a role in the Ducks Lane project, which is a smaller version of this project.

### **Meeting with Head of Chief Operating Officer of the Bega Circular Valley**

On the 29<sup>th</sup> February, Di Dibley, others from the Sustainable G-M Committee will be meeting with Andrew Taylor, COO of the huge Bega Circular Valley program, to find out more about what they are doing. The plan is to link up with the BCV and play to each others strengths.

### **Meeting with Regen Action In Moss Vale This Week**

A catch-up is planned with a member of our SE NSW Network to discuss our respective plans and use them to further build our relationship and knowledge sharing

## **Goulburn Farmers Market**

There was a lot more interest in the work of the CSH at the second market in January, which suggests that the word is getting out there. Will be there again for the February Market with more home grown produce and information on the CSH. Looking for at least one volunteer to help out.



## **Summary**

The incorporation of the G-M CSH As Sustainable Goulburn Mulwaree is now imminent and will be a big step forward.

The large scale farm land and urban regeneration projects set the scene for significant carbon sequestration and a sustainable future.

For more information about the CSH see our web pages, nb it has not been possible to create an active link, so you will need to do a cut and paste into your browser. <https://www.cv-4h.org/g-m-community-sustainability-hub-overview.html#/>

To join the CSH or the mailing list, email [bob.philipson99@gmail.com](mailto:bob.philipson99@gmail.com), or call on 0418 138 004