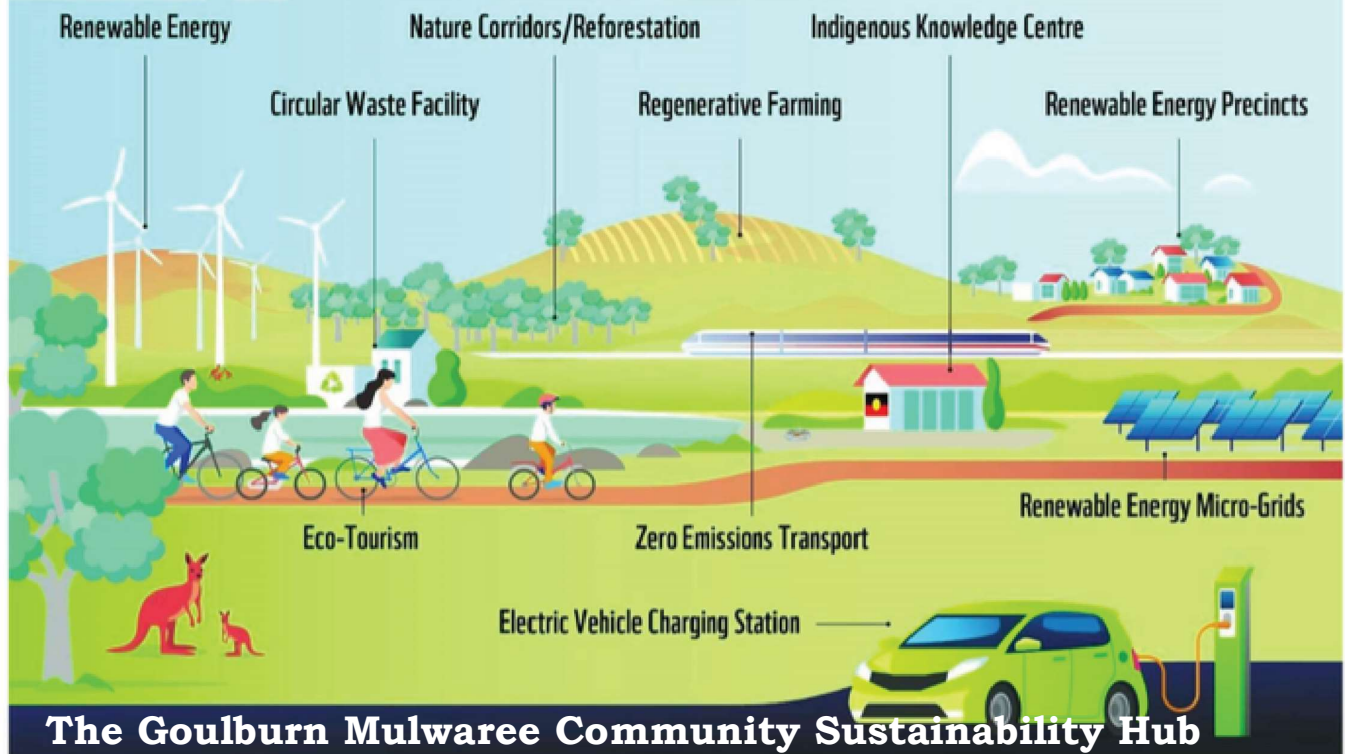


A Vision for Regenerative Communities



Landcare
Goulburn Mulwaree Grazing
and Farming Group



The Goulburn Mulwaree Community Sustainability Hub

Our Vision

To have a healthy, sustainable community across Goulburn Mulwaree.

Our Mission

Starting with the least advantaged, to build a sustainable community that acts together to address the challenges of the changing climate:- <https://landcare.nsw.gov.au/groups/community-voice-for-hume/goulburn-mulwaree-sustainability-hub/>

Bulletin:- 15-10-23

Much has happened since the announcement of the launch of the Community Sustainability Hub, not the least of which is the truly disappointing defeat of the “Voice” referendum. A date for the initial meeting of the Steering Committee is scheduled for Saturday 18th November, 11am-3pm.

Goulburn-Mulwaree Regen Ag and Landscape Regeneration Project To Engage with Youth.

The EOI for the project went in 6th October and, all things being equal, the project proposal will follow. This opportunity comes to us from Bioregional, a member of the CSH, see:- <https://www.bioregional.com/one-planet-living>.

The CSH incorporates “One Planet Living” in its framework.

Potential CSH members of this project ***could*** include:-

- First Nations People
- Community Voice For Hume
- Landcare G-M
- Local schools
- ZeroSE, for project metrics
- Chevalier College & Regen Action as CC are running a Regen Ag project with Regen Action
- ANU – Regen Ag & Landscape regeneration, in particular bringing the two together where possible
- LLS SE NSW – collaborate in-line with LLS’ strategic plans
- Chamber of Commerce
- G-M Council

Other Plans and News!!

- **Call To Arms re The Council's Lack of Effective Climate Action**. Many of you will be aware that the Goulburn Mulwaree Council, has issued notice of a Special Rate Variation and cited road damage from the weather as one of the reasons for the increase. Whilst the GMC is not alone in raising rates, its lack of effective climate action is of serious concern. The GMC's Climate Action Plan no longer seems to be on its web site and is not included in its Risk Management Policy! Without appropriate and timely climate action, there is a significant risk of more Special Rate Rises. Part of the GMC's planning must include putting funds aside to plan for and to mitigate climate risks. The above is on the agenda for the first CSH meeting on 28/10. Follow this link to find the above mentioned policies and plans:- <https://www.cv-4h.org/goulburn-mulwaree-climate-plans.html#/>
- **Eco-Tourism Part 1** – this is planned to start with tours led by our First Nation People, of the Wetlands and expand from there, eg into the West Goulburn Bushland. Tours to be booked (and paid for) through the Visitor Centre and start with an overview of the First Nations People's history of the wetlands area.
- **Eco-Tourism Part 2** – an extension of Part 1 above and is about Sustainable Gardens and to be organised by the Visitor Centre for people outside Goulburn. Potential initial gardens:-
 - North Goulburn Union Street:- Vegetables, Fruit, trees and bushes, launch meeting scheduled, see below for the details:-
 - West Goulburn off Wheeo Rd, flood mitigation (through water capture), native planting veggie patch, chickens and retro-fit sustainable House
 - Ducks Lane, Run-O-Waters, flood mitigation through swales, ponds and native planting, and drainage
 - Tarago – Permaculture-based plan, water capture with swales, vegetables, chickens, pigs, vegetables and fruit trees. Aiming at self-sufficiency on 2.5 acres
 - **Do you have such a garden to show to others?**
- **Be Part of The first Neighbourhood Garden Action Group** – which is in North Goulburn centred around Union Street. The group is led by

Cindy, who some help, has built a sustainable fruit and vegetable garden. **Register a place on this link for 10am 4th November:-**

<https://events.humanitix.com/sustainable-gardens-union-street-goulburn-and-beyond>
You are also invited to attend if you are interested in starting a group in your neighbourhood.

- **Goulburn Crookwell Rail Trail** – this is another tourist opportunity that fits in with the eco-theme that will be run in conjunction with our First Nations people and would bring more business into Goulburn. See the following for an update on the Rail Trail's status:-
<https://m.facebook.com/jo.haylen/videos/goulburn-to-crookwell-rail-trail/1624278464369229/>
- **Building A Circular Economy in G-M** – the Chamber of Commerce has a key role to play in building a circular economy, including the Regen Ag and Landscape Regeneration Project covered at the start of this newsletter. For information on the **Bega Circular Valley** project <https://begacircularvalley.com.au/circularity/>
- **G-M CSH Website and Fb Group** are being organised, Fb being first as to set up the website is quite involved.
- **Sustainability Conference and Expo** – This is a major event planned for 2024 in spring or autumn and is a follow-on from the highly successful *Lets Get Earthy conference* in 2022. It is designed to promote G-M and surrounds and to attract new talent based on the development of:-
 - Sustainable Businesses
 - Sustainable Living
 - Eco-tourism
 - Regenerative Agriculture
 - Sustainable Housing Development
 - Centre for Sustainability Research
 - Documented Carbon Sequestration

Be part of the team to put the above conference together.

To join the G-M CSH as a business or individual, as a foundation member, there is no charge. To join go to:- [CSH Membership Sign-Up](#)