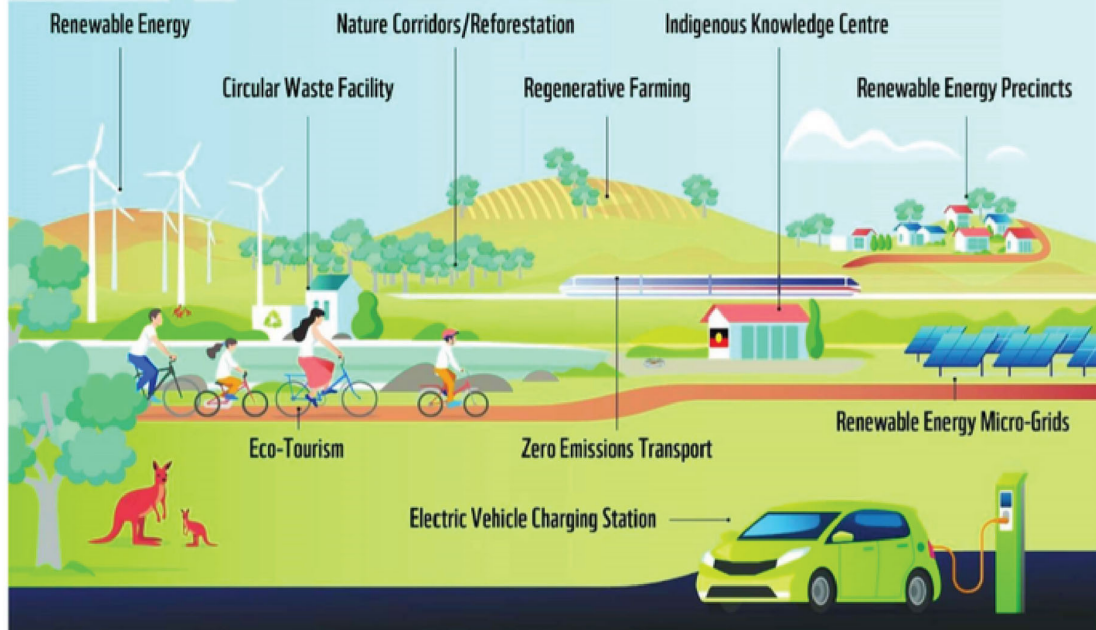


# A Vision for Regenerative Communities



**Landcare**  
Goulburn Mulwaree Grazing  
and Farming Group



## **Our Vision**

To have a healthy, sustainable community across Goulburn Mulwaree.

## **Our Mission**

Starting with the least advantaged, to build a sustainable community that acts together to address the challenges of the changing climate:- <https://www.cv-4h.org/g-m-community-sustainability-hub-overview.html#/>

## **Bulletin:- 1<sup>st</sup> December 2023**

### **Web Site Update and Relocation**

A key step in establishing the CSH as a (non-return) Cooperative, is the creation its own website. Following is a link to its current and, recently updated, web presence:- [CSH Web](#)

Individuals, Community Groups and commercial enterprises can sign up at no cost for the first 12 months: this offer ends 31<sup>st</sup> December 2023. Not For Profit entities are not required to pay membership, assuming that any and all of their profits, are invested back into the group/community

Pending the CSH transitioning to a Co-operative (non return) it is still a part of Community Voice For Hume (the parent body) so by joining the CSH you are automatically a member of CV4H. There are no obligations entailed by the CV4H membership. See:- [CSH Membership](#)

### **Strategic Planning Workshop on 9<sup>th</sup> December To Define Its Direction Prior To A Formal Launch**

A strategic planning workshop has been scheduled to set the objectives, direction and priorities of the G-M CSH and will be run by a professional planner and facilitator. We already have detailed plans for the CSH, a history of running projects and a significant list of new projects. We have some seed funding and have identified means of generating income to pay for future operations.

The steering committee will be guided by our First Nations steering group member, as a way to help bring the whole community together after the referendum. The steering committee will represent key groups from G-M and SE NSW, as shown in the Community Sustainability Hub diagram: [Community Sustainability Hub](#)

### **G-M CSH Invited To Join International Network of Organisations Working To Build “Sustainable and Just Cities”.**

**The G-M CSH is now in a position to create an international profile for Goulburn Mulwaree as a “Sustainable and Just City” in the ACT in particular and Sydney.** Those credentials will help attract tourists to Eco, Agri and historic tours of Goulburn Mulwaree including the Wetlands, regenerated riverine areas, such as along the Wollondilly.

### **G-M CSH Invited To Visit The Bega Circular Valley/CSH Co-operative**

A meeting is being scheduled with the Bega Circular Valley Co-op to discuss working together and to gain a better understanding of this exciting program. More information about the BCV can be found here:- [Bega Circular Valley](#). NB our CSH is not trying to replicate what the BCV is doing as we have different geography and different business profiles, but to learn from it and seek opportunities of complementary engagement.

### **Initial Meeting Scheduled To Discuss Possible Funding From NSW Government For CSH Projects**

This meeting is to provide a briefing on our plans and to discuss possible funding. This opportunity came to us as a result of the BCV making representations on our behalf, thanks go to Andrew Taylor, Circularity Program Manager. The NSW Dept in question made a \$10m grant to the BCV.

### **Farmers Market**

The CSH will be taking on a stall at the highly successful Farmers Market running at the Showgrounds. It is planned to sell produce from CSH members with proceeds going to charities that support the disadvantaged in our community. If you have a history of producing spare vegetables and are happy to donate them, please let me know and we can contact you before the markets. We could also potentially offer First Nations People, potentially offer “Bush Tucker” with that money going to a suitable First Nations fund.



## **SE NSW CSH Network**

The G-M CSH includes amongst its many members, ANU Sustainable Farms, Australian Rivers Restoration Centre, Australian Agricultural Centre, ZeroSE (itself a network of groups), Bioregional Australia and businesses such as Divalls, so it is reasonable to think about it as covering SE NSW.

Assuming that the Bega Circular Hub joins the Network the result should be a magnet for investment in sustainability, something that BCV have already demonstrated in spades!

## **Member of Circular Australia**

As a member of Circular Australia, the G-M CSH can draw on their resources and expertise. A visit from one of their board members is (tentatively) scheduled for February. The transition of G-M's economy from mostly one that is linear to one that is circular will take time. We already have a fine example of a Circular Economy with the G-M Council recycling waste into excellent and much in demand compost. The river-walk, funded by the G-M Council, is also an excellent example of what can be done to showcase our landscape and attract tourists. Conducting tours, led by a First Nation's representative, is a real opportunity to cover the First Nation's history and showcase one of G-M's many attractions.

## **Rail Trail**

The rail trail, a part thereof, is another opportunity to attract tourists and to provide a First Nations perspective on the track, in a way that everyone benefits. Once more there is a large and immediate clientele in Canberra and that should help support the case for funding.

## **Summary**

This newsletter covers a small part of the potential for G-M and SE NSW have in building a sustainable future and all are invited to come onboard for the journey. This is also a big opportunity to harness the skills and knowledge of our First Nations Peoples who have some 60,000 years experience of living sustainability and in harmony with the landscape flora and fauna.